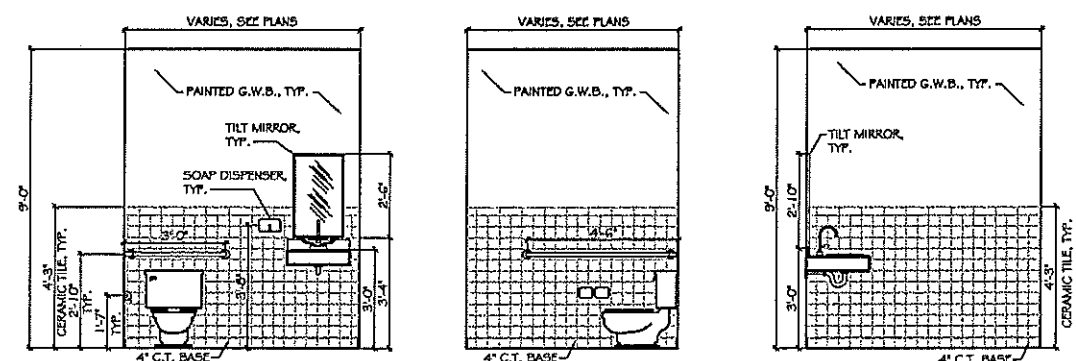


**TYPICAL BATHROOM PLAN**  
 SCALE: 1/2" = 1'-0"  
 NOTE: DIMS ARE TO FINISH FACE OF WALL, TYP.

**ENLARGED CONCRETE WALL PLAN**  
 SCALE: 1/4" = 1'-0" FIRST FLOOR



**1 TYP. RESTROOM ELEVATION** SCALE: 1/2" = 1'-0"  
**2 TYP. RESTROOM ELEVATION** SCALE: 1/2" = 1'-0"  
**3 TYP. RESTROOM ELEVATION** SCALE: 1/2" = 1'-0"

Zona & Associates, P.A.  
 Building Architecture  
 100 SOUTH GATEWAY DRIVE, SUITE 200, AMELIA ISLAND, FLORIDA 32035  
 TEL: 904/277-1111 FAX: 904/277-1111  
 WWW.ZONA.COM

RETAIL & OFFICE COMPLEX  
 FOR  
**GATEWAY TO AMELIA**  
 BUILDING No.9  
 AMELIA ISLAND, FLORIDA

DATE: 06/06/03  
 DRAWN: J. B. BROWN  
 CHECKED: J. B. BROWN

NO.	REVISION	DATE
06/06/03	OWNER REVIEW	
03/14/03	PERMIT ISSUE	

BLDG. 9  
 INT. ELEV.  
 AND  
 ENLARGED  
 FLOOR PLANS