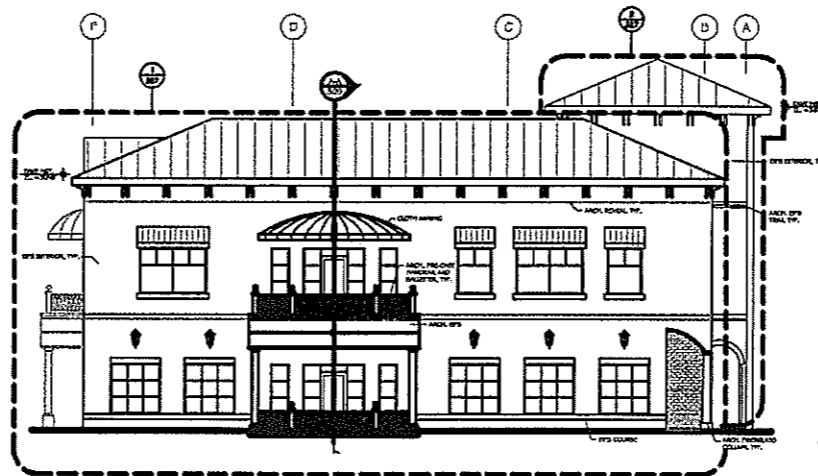




**NORTH ELEVATION**  
SCALE: 1/8" = 1'-0"



**EAST ELEVATION**  
SCALE: 1/8" = 1'-0"

Zona & Associates, P.A.  
*Chalchicahuac Architects*  
 100 SOUTH UNIVERSITY AVENUE, SUITE 200, PALM BEACH, FLORIDA 33480  
 TEL: (561) 832-1111 FAX: (561) 832-1112  
 WWW.ZONA-PA.COM



RETAIL & OFFICE COMPLEX  
 FOR  
**GATEWAY TO AMELIA**  
 BUILDING No. 9  
 AMELIA ISLAND, FLORIDA

DATE: 06/03/03

NO.	DATE	DESCRIPTION	BY	CHKD.
1	06/03/03	OWNER REVIEW		
2	03/14/03	PERMIT ISSUE		
3				
4				
5				
6				
7				
8				
9				
10				

DATE: 06/03/03

BLDG. 9  
 EXTERIOR ELEVATIONS