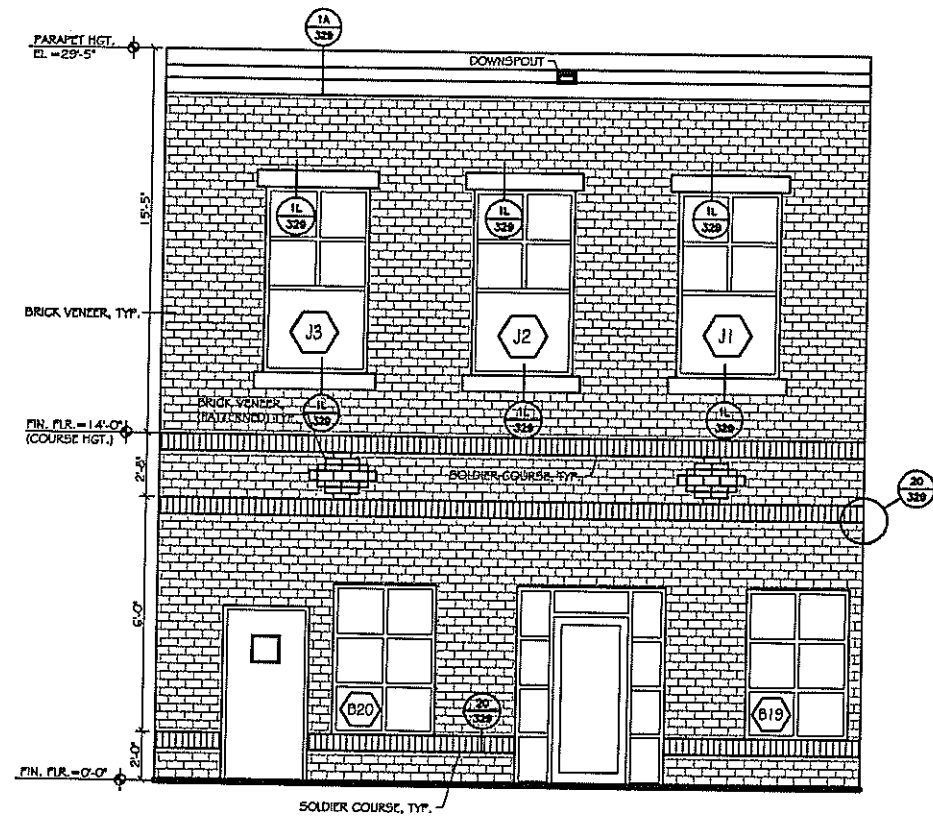


1 ENLARGED ELEVATION
319 SCALE 3/8" = 1'-0"



2 ENLARGED ELEVATION
319 SCALE 3/8" = 1'-0"

Zona & Associates, P.A.
Architectural Architects
100 SOUTH HUNTERSLEY AVENUE, SUITE 200, FORT WORTH, TEXAS 76104
TEL: 817.339.1111 FAX: 817.339.1111
WWW.ZONAARCHITECTS.COM



RETAIL & OFFICE COMPLEX
FOR
GATEWAY TO AMELIA
BUILDING No. 9
AMELIA ISLAND, FLORIDA

DATE: 08.03.03
DRAWN BY: [unintelligible]

NO.	DATE	DESCRIPTION	BY	CHECKED
08.03.03		OWNER REVIEW		
03.14.03		PERMIT ISSUE		

ARCHITECT
ZONA & ASSOCIATES, P.A.
100 SOUTH HUNTERSLEY AVENUE, SUITE 200
FORT WORTH, TEXAS 76104
TEL: 817.339.1111 FAX: 817.339.1111
WWW.ZONAARCHITECTS.COM

BLDG. 9
ENLARGED EXTERIOR ELEVATIONS

319